

**WE ARE HERE**

**OUTMEMPHIS  
2019 RECAP**

KAB, 21, HE/HIM/HIS



## Health & Wellness



## Youth & Families



## Culture & Community



**MOLLY ROSE QUINN**  
*Executive Director*

### 2019 has been a year of growth.

We began this year by proudly displaying billboards across Memphis that read **WE ARE HERE / ESTAMOS AQUÍ**. Thirty years since our founding and fifty years since the Stonewall Riots, that message is still a necessary reminder to those who need to hear us most.

On my first day at OUTMemphis, just ten months ago, we were a relentless operation bursting the seams of the Midtown house our supporters helped us purchase in 2003. By January 2020, our growing staff will be serving three unique and upgraded facilities: our flagship Community Center, our new Administrative & Donation Center, and our Youth Emergency Center, which opens next month.

In 2019, every aspect of “what we do” and “how we do it” has expanded: our services, our intersectional community, our facilities, and our staff. I hope you will spend time today with the enclosed pages: an extraordinary sample of our milestones and of the individuals who make OUTMemphis “OUTMemphis.”

Our year of growth was made possible by our donors at every dollar amount. It is your support that enables us to deliver affirming shelter and to foster a culture of safety and joy for all. I am writing you today to ask that you choose OUTMemphis in your end of year giving or to increase your annual amount. **Enclose your donation today or contact us at [outmemphis.org](http://outmemphis.org) before December 31, 2019.**

With enormous thanks,

### *The Staff*

**Molly Rose Quinn**  
Executive Director

**Martavius Hampton**  
Senior Director, Health & Evaluation

**Stephanie Reyes**  
Senior Director, Development & Education

**Stephanie Bell**  
Director of the Metamorphosis Project

**Becky Hall**  
Director of Finance & Operations

**Jessie Claudio**  
Health Services Manager

**Chris Riales**  
Operations Specialist

**Emerson Kirkpatrick**  
Youth Services Specialist

### *The Board*

**Jonathan M. Ealy**, Chair

**Carol Livingston**, Vice Chair

**Maria del Socorro Hubbard**, Secretary

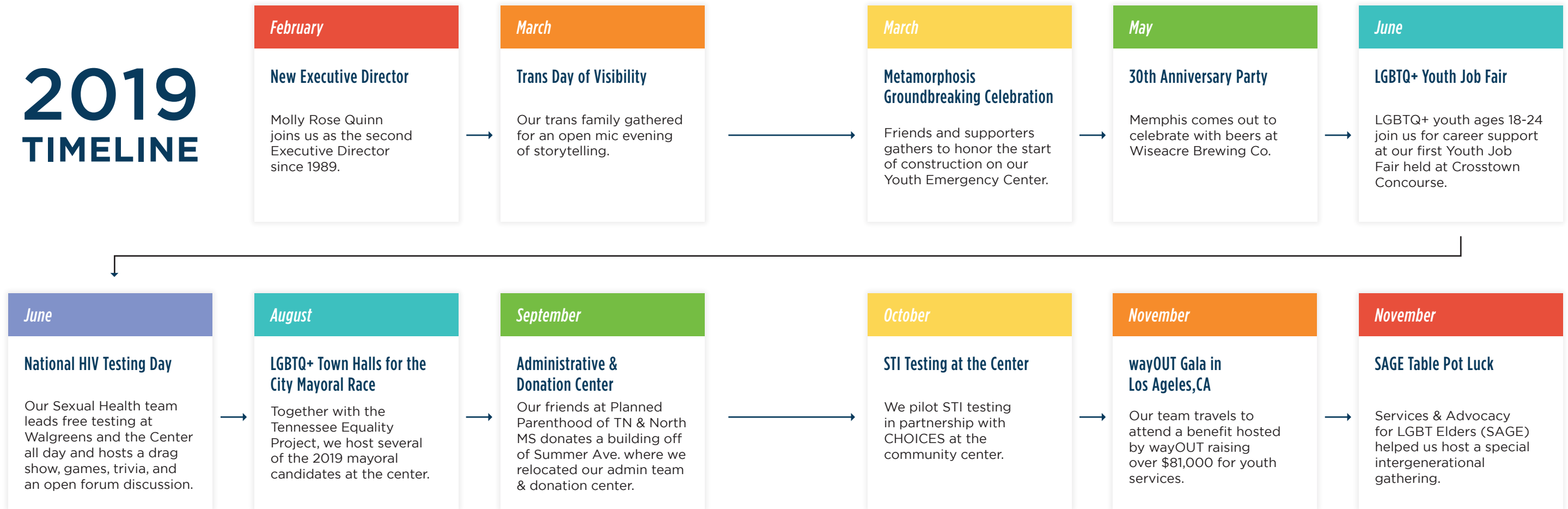
**Matt Barrett**, Treasurer

**Aimee Lewis**

**Jeff Rhodin**

**Miska Shaw**

# 2019 TIMELINE



## 2019 By the Numbers



- 6000** VISITORS
- 2500** HOURS OF VOLUNTEER SUPPORT
- 500** DONORS
- 563** PEOPLE TESTED FOR HIV and STIs
- 100%** OF HIV+ LINKED TO CARE



- 15** YOUTH HOUSED FOR ONE YEAR
- 728** PARTICIPANTS IN COMMUNITY YOUTH PROGRAMS
- 546** PARTICIPANTS IN TRANS SERVICES
- 270** PARTICIPANTS IN SENIOR SERVICES
- 103** YOUTH RECIEVED GOODS FROM OUR DONATION CENER



## OUTMemphis 2020: Looking Ahead

### Opening the Metamorphosis Project Youth Emergency Center

On January 25, we will celebrate the official start of operations, including drop-in services and emergency overnight shelter. 2020 will also include the expansion of our full-service Donation Center on Summer Avenue and our Rapid Re-Housing program, which provides 1 year of rental assistance to LGBTQ+ youth.

### Organizational Sustainability

2019 was our year of growth, a launch point from our first 30 years to the next 30. In 2020, our priority will be deepening the longterm impact of our programs and services and the retention of our staff, Board, volunteers, and supporters.

### Expansion of Health Services

After ten years of providing community-based and racial justice-driven sexual health services, OUTMemphis will be expanding services on five other areas research identifies as uniquely essential to our community: mental health, body image and nutrition, substance abuse, spiritual health, and intimate partner violence.

### Planning Phase of our Social Enterprise

In 2020, we will complete the planning phase for our future Social Enterprise: a commercial project, operated fully by OUTMemphis, providing employment and job training to LGBTQ+ Memphians excluded from economic stability. Our Social Enterprise project is supported by the Kresge Foundation and their KIP:M program.

### Growth in Trans Services

In January, we will kick off an ongoing expansion of social support and direct services for our trans family. This will include our first ever Trans Services Fellowship, a paid six-month opportunity for peer advocates under 25.

### Assessment & Evaluation

As each of our programmatic pillars expands, OUTMemphis will invest this coming year in data-driven community needs assessments and will use our partners and unique skillsets to evaluate the successes of our program. We are one of the oldest LGBTQ+ providers in the country and we aim to use that wealth to lay the groundwork for efforts to come.



### MACKENZIE

*she, her, hers*

“I’m not waiting for your okay because I know I am brave. I will never be perfect so now that I have my heart open, I can breathe.”



### CODY

*he, him, his*

“My parents – they didn’t know how to handle it. And when they didn’t know how to handle it, I ended up not knowing how to handle it.”



### ARSHAWN

*he, him, his*

“We always get criticized, but we have to overlook that and focus on what makes us happy as a person and people in general, and we just have to strive for better.”

**A SPECIAL THANKS TO**

*Kevin Reed*  
PHOTOGRAPHY



**KATIE COOPER**  
CREATIVE DIRECTOR • DESIGNER

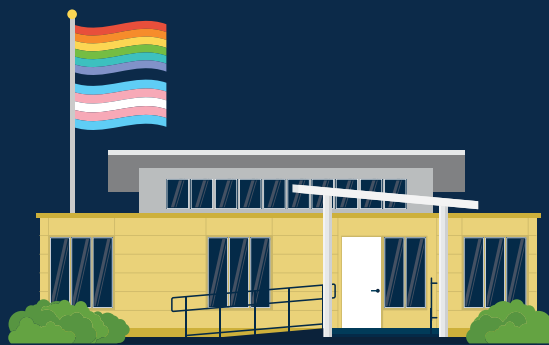


Headshots courtesy of Project Contrast [www.projectcontrast.com](http://www.projectcontrast.com)



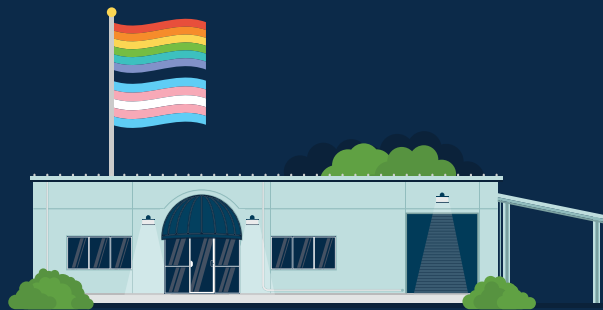
OUTMEMPHIS COMMUNITY CENTER

892 COOPER STREET



THE METAMORPHOSIS PROJECT:  
YOUTH EMERGENCY CENTER

2055 SOUTHERN AVENUE



ADMIN & DONATION CENTER

832 VIRGINIA RUN COVE



THE LGBTQ+ CENTER FOR THE MID-SOUTH  
OUTMEMPHIS.ORG | 901-212-6422  
INFO@OUTMEMPHIS.ORG | @OUTMEMPHIS